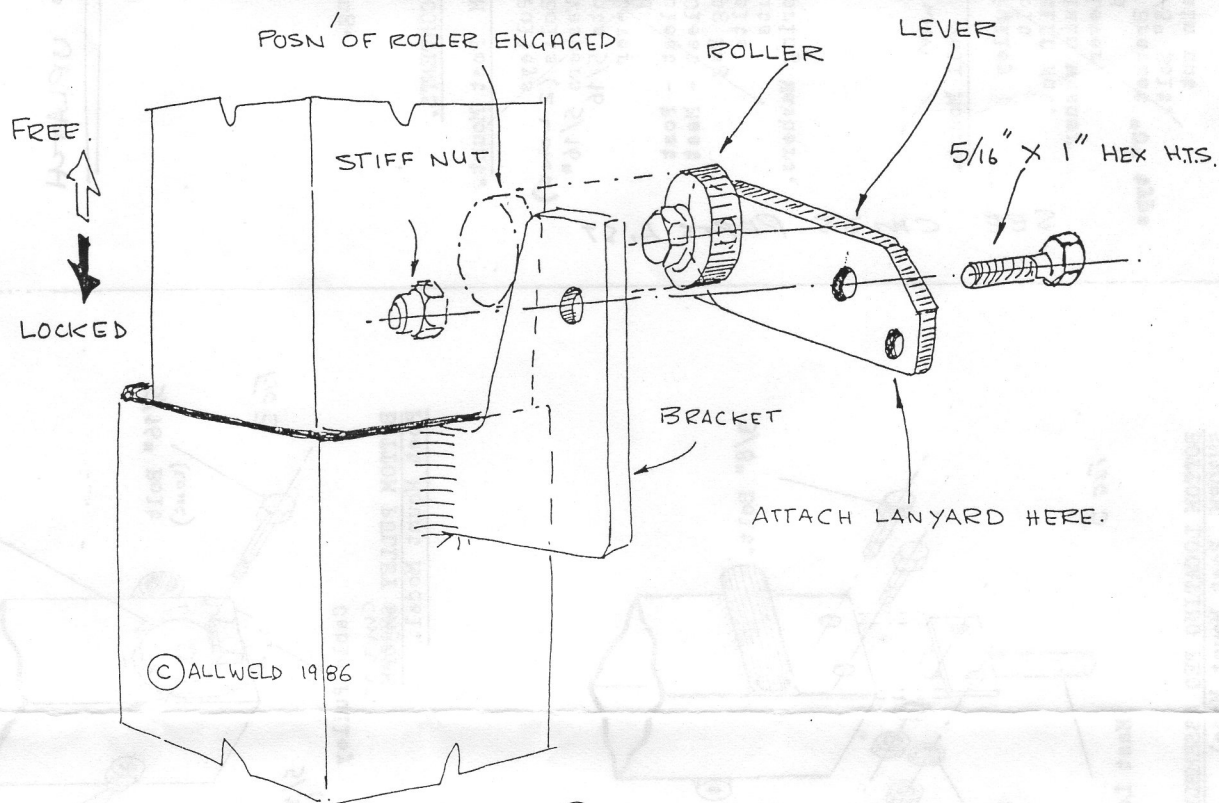


# PATENT ALTRON AUTO LOCK CM35.



NOTE! MAST LOCKS IN ANY POSITION OF EXTENSION.

- ① ASSEMBLE LEVER TO BRACKET USING 5/16  $\phi$  BOLT AND STIFF NUT. "DO NOT OVER TIGHTEN - LEVER MUST FLOP FORWARD. TO ALLOW ROLLER TO WORK."
- ② TO LOCK, SIMPLY RELEASE LANYARD SO LEVER DROPS - ROLLER IS TRAPPED
- ③ TO FREE; EXTEND INNER SLIGHTLY WITH WINCH. HOLD LEVER UP WITH LANYARD.

